

# NATIONAL CAPITAL BUSINESS PARK

## COMMUNITY UPDATE

MANEKIN®

  
TURNBRIDGE  
EQUITIES

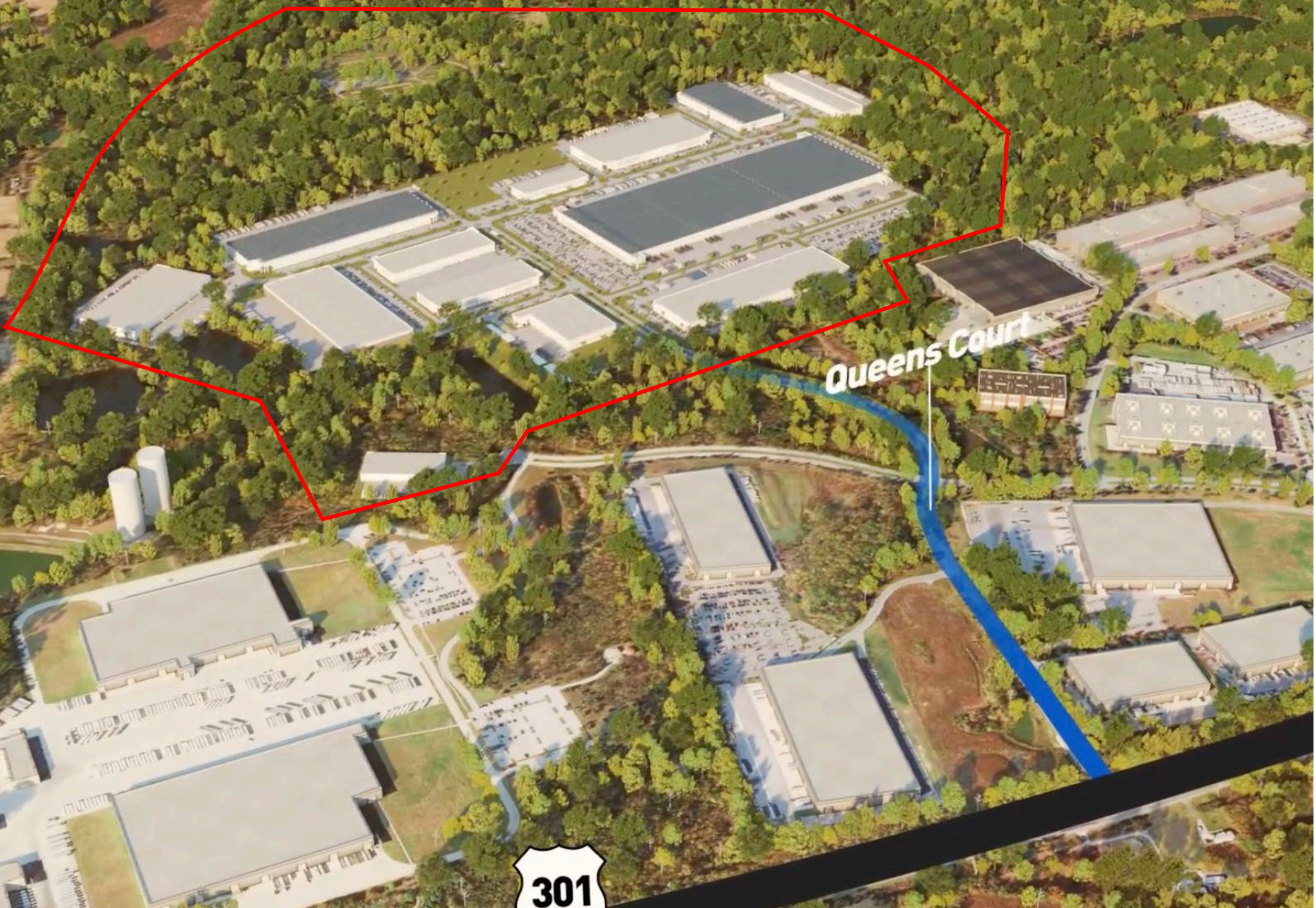
**NAI**Michael  
COMMERCIAL REAL ESTATE SERVICES, WORLDWIDE

Location



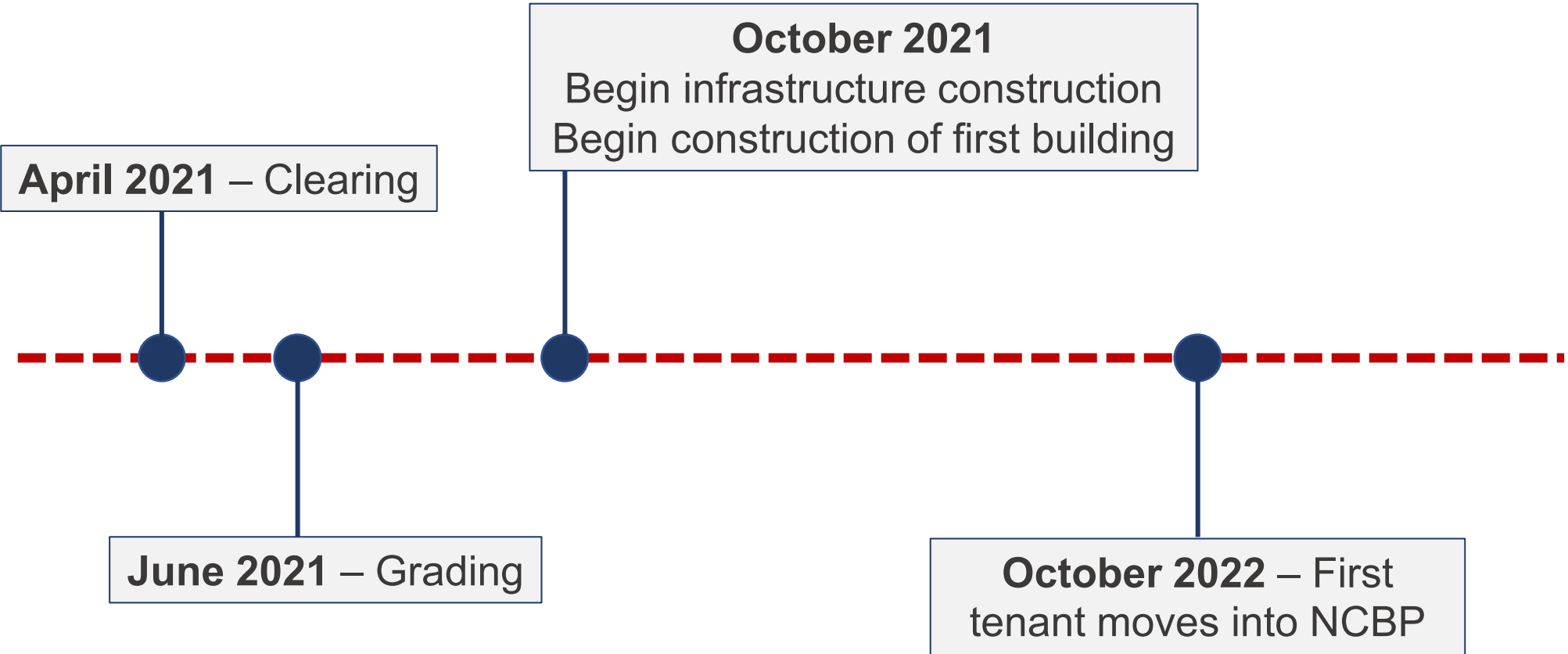
*This diagram is presented for illustrative purposes only and will be refined by subsequent development applications.*

**NATIONAL  
CAPITAL**  
BUSINESS PARK

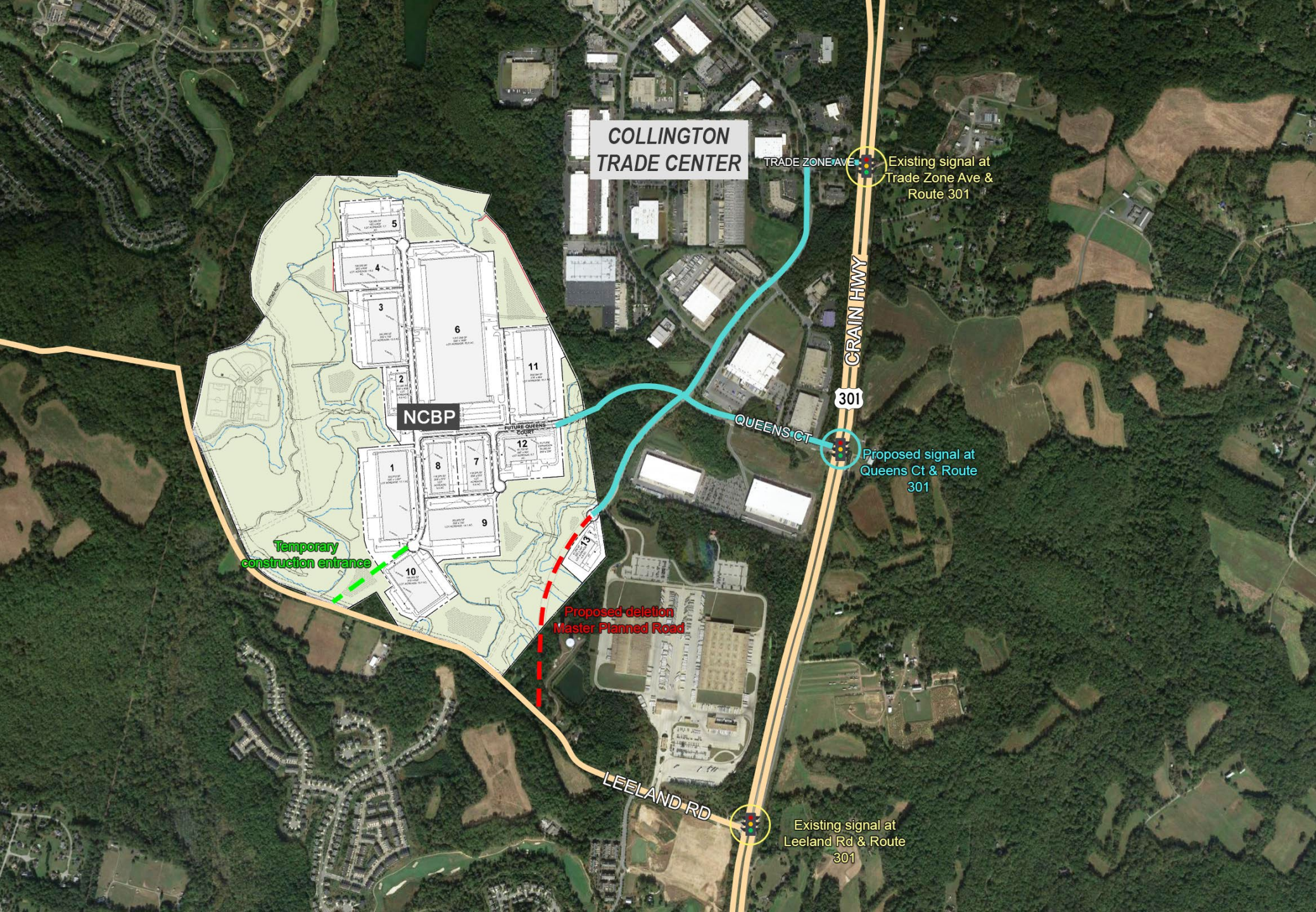


*This diagram is presented for illustrative purposes only and will be refined by subsequent development applications.*

Timeline



**NATIONAL  
CAPITAL**  
BUSINESS PARK



*This diagram is presented for illustrative purposes only and will be refined by subsequent development applications.*

20-Acre Public Park  
 10' wide master trail &  
 6' wide feeder trails

**STANDARD DRAWING LEGEND**

TRAIL CONNECTIONS (ON-SITE)	
SIDEWALK CONNECTIONS (LELAND RD. & CHURCH RD.)	
EX. ROAD AND DRIVEWAY (TO REMAIN FOR PEDESTRIAN AND MAINTENANCE USE)	
TRAIL CONNECTIONS (OFFSITE)	
LIMIT OF DISTURBANCE	
ON-SITE PROPERTY LINE/ R.O.W. LINE	
NEIGHBORING PROPERTY LINE	
EX. STREAM LINE	
EX. WETLAND BOUNDARY	
EX. FLOODPLAIN	
TIMBER BRIDGE / BOARDWALK	

**NATIONAL  
 CAPITAL**  
 BUSINESS PARK



*This diagram is presented for illustrative purposes only and will be refined by subsequent development applications.*

# **NATIONAL CAPITAL BUSINESS PARK**

**Thank You!**

We will keep you updated on our progress

For any questions please contact:

**Steve Proctor** - [gsp@gsproctor.com](mailto:gsp@gsproctor.com)

**Tony Perez** - [tony@laperezconsulting.com](mailto:tony@laperezconsulting.com)

**Trey Proctor** - [tproctor@gsproctor.com](mailto:tproctor@gsproctor.com)